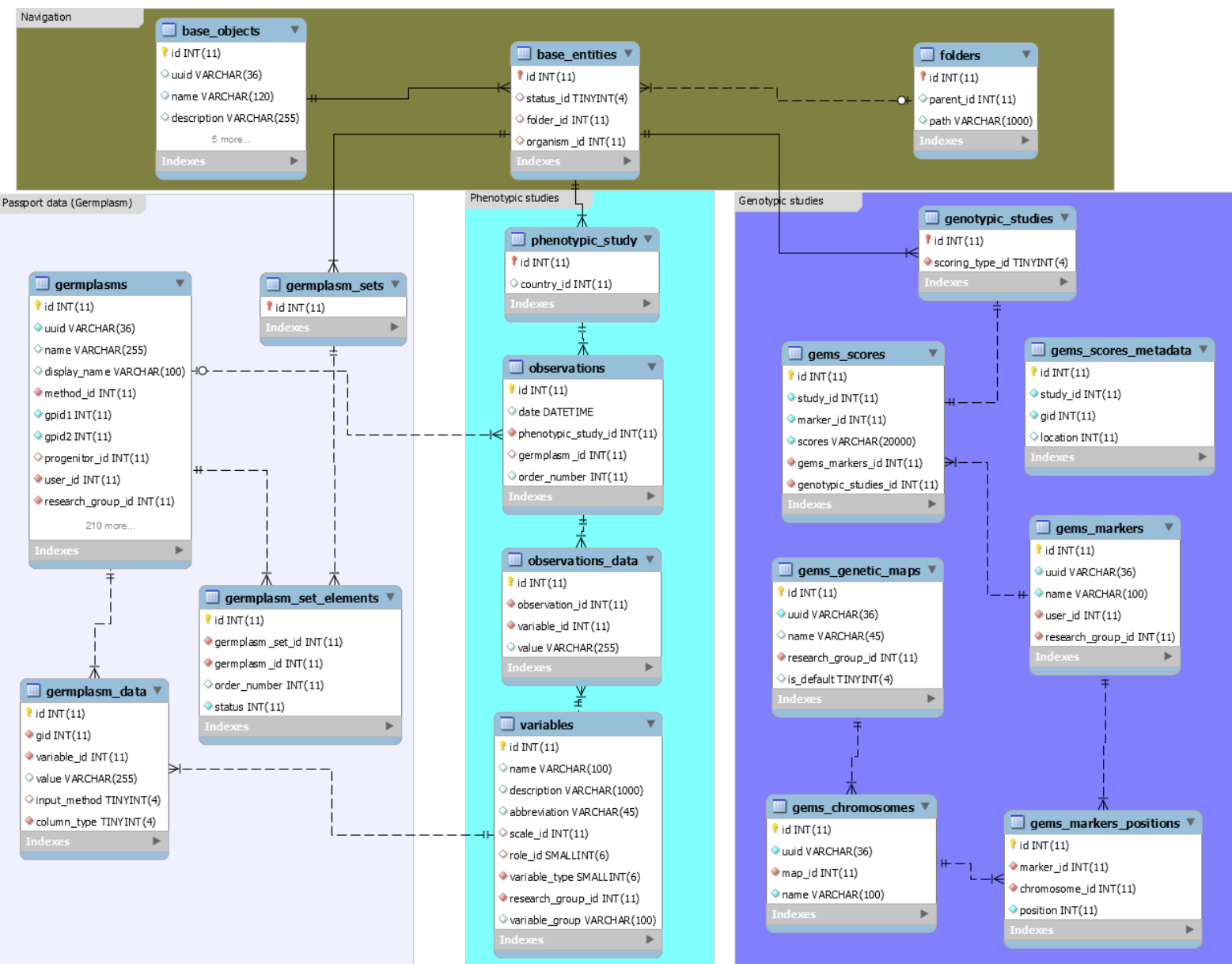


Project Unity database schema

Contents

- Diagram..... 1
- List of tables / columns..... 2
- Interface for loading data 5
 - Tutorial videos 5
 - Manuals..... 5
- API..... 5

Diagram



List of tables / columns

Type	Table/Field	Column's type
TABLE	germplasms	
COLUMN	id	INT
COLUMN	uuid	Varchar
COLUMN	name	Varchar
COLUMN	method_id	INT
COLUMN	gp1d1	INT
COLUMN	gp1d2	INT
COLUMN	progenitor_id	INT
COLUMN	user_id	INT
COLUMN	research_group_id	INT
TABLE	germplasm_sets	
COLUMN	id	INT
TABLE	germplasm_set_element	
COLUMN	id	INT
COLUMN	germplasm_set_id	INT
COLUMN	germplasm_id	INT
COLUMN	order_number	INT
COLUMN	status	INT
TABLE	germplasm_data	
COLUMN	id	INT
COLUMN	gid	INT
COLUMN	variable_id	INT
COLUMN	value	Varchar
COLUMN	input_method	INT
COLUMN	column_type	INT
TABLE	phenotypic_study	
COLUMN	id	INT
TABLE	observations	
COLUMN	id	INT
COLUMN	date	Date
COLUMN	phenotypic_study_id	INT
COLUMN	germplasm_id	INT

COLUMN order_number INT

TABLE **observations_data**

COLUMN id INT
COLUMN observation_id INT
COLUMN variable_id INT
COLUMN value Varchar

TABLE **variables**

COLUMN id INT
COLUMN name Varchar
COLUMN description Varchar
COLUMN abbreviation Varchar
COLUMN scale_id INT
COLUMN role_id INT
COLUMN variable_type INT
COLUMN research_group_id INT
COLUMN variable_group Varchar

TABLE **genotypic_study**

COLUMN id INT
COLUMN scoring_type_id INT

TABLE **gems_scores**

COLUMN id INT
COLUMN study_id INT
COLUMN marker_id INT
COLUMN scores Varchar
COLUMN gems_markers_id INT
COLUMN genotypic_studies_id INT

TABLE **gems_scores_metadata**

COLUMN id INT
COLUMN study_id INT
COLUMN gid INT
COLUMN location INT

TABLE **gems_markers**

COLUMN id INT
COLUMN uuid Varchar
COLUMN name Varchar
COLUMN user_id INT

COLUMN	research_group_id	INT
--------	-------------------	-----

TABLE **gems_markers_positions**

COLUMN	id	INT
COLUMN	marker_id	INT
COLUMN	chromosome_id	INT
COLUMN	position	INT

TABLE **gems_chromosomes**

COLUMN	id	INT
COLUMN	uuid	Varchar
COLUMN	map_id	INT
COLUMN	name	Varchar

TABLE **gems_genetc_maps**

COLUMN	id	INT
COLUMN	uuid	Varchar
COLUMN	name	Varchar
COLUMN	research_group_id	INT
COLUMN	is_default	INT

TABLE **base_entities**

COLUMN	id	INT
COLUMN	status_id	INT
COLUMN	folder_id	INT
COLUMN	organism_id	INT

TABLE **folders**

COLUMN	id	INT
COLUMN	parent_id	INT
COLUMN	path	Varchar

TABLE **base_objects**

COLUMN	id	INT
COLUMN	uuid	Varchar
COLUMN	name	Varchar
COLUMN	description	Varchar
COLUMN	code	Varchar
COLUMN	research_group_id	INT
COLUMN	type_id	INT
COLUMN	user_id	INT
COLUMN	status	INT

Interface for loading data

Tutorial videos

[Upload Passport data](#)

[Upload phenotypic study](#)

Manuals

[Upload passport and phenotypic study](#)

API

The API that was chosen to be implemented is [BRAPI](#), which is a US funded initiatives that developed API specifically for breeding databases. This will be developed as part of task 6.2 under deliverable D6.2 due on month 24.